



Company Project

SPRINGBANK AQUATIC CENTER • Plainfield, IL



The Springbank Aquatic Center, located in Plainfield, IL, is a newly constructed recreational aquatic facility that serves its namesake subdivision. EDS was contracted to install the power, lighting, security, fire alarm, audio, sound and telecommunications systems for the facility. The job required 68,000 watts of illumination on 60 lighting standards, including all necessary excavation and concrete foundation work. Despite an already aggressive time frame for completion of this project, EDS was able to complete a substantial portion of their work almost three weeks ahead of schedule, helping to ensure a June 2006 opening of the facility.

Some of the unique features of this project include:

- A programmable lighting control system
- The specialized NEC mandated equipotential grounding system throughout the 16,000 sq. ft. deck area
- A practical and efficiently installed wiring system in the concessions area to power kitchen equipment
- A highly functional, yet architecturally attractive system of linear lighting in the 5,027 sq. ft. Bathhouse facility
- A reliable, industrial-grade power system and controls for the Pool Water Pump & Treatment Building's system of pumps and chemical feeder equipment

ELECTRICAL

DESIGN/BUILD | ELECTRICAL | SECURITY | FIRE ALARM
AUDIO | TELECOMMUNICATIONS



Company Project

AQUASCAPE DESIGNS, INC. • St. Charles, IL



Aquascape Designs, Inc. is a water garden wholesale company located in St. Charles, IL. EDS was given the task of designing and installing the power and lighting systems throughout their new headquarters facility ("Aqualand"). Since this building featured an exposed-beam and column industrial design, the project posed an added challenge for EDS in that careful planning for the installation of conduit systems was required.

Some of the unique features of this project include:

- Close interaction between EDS and LEED (Leadership in Energy and Environmental Design) consultants to provide the customer with maximum energy conservation and cost savings (i.e. automated lighting controls to monitor daylight levels, energy efficient lamp fixtures and configurations, etc.)
- A power supply to the irrigation pump for the green roof
- Power and lighting systems for both indoor and outdoor showcase pond systems
- Installation of both regular power and UPS power (with generator backup) in all the modular office furniture, to ensure no lost sales or productivity during power outages
- Coordinating power wiring and lighting controls for the exercise room, which features a sauna, steam room, and hot and cold plunge tubs
- Close consultation with the customer to equip a training room with coordinating lighting and audio-visual systems, for a completely automated, customized, state-of-the-art meeting facility

ELECTRICAL

DESIGN/BUILD | INTERIOR/EXTERIOR ELECTRICAL | LIGHTING | AUDIO/VISUAL



Company Project

WEBER GRILL RESTAURANT • Schaumburg, IL



EDS was contracted to design and build the electrical system for the Schaumburg, IL Weber Grill Restaurant, a nationally recognized outdoor barbeque grill manufacturer/restauranteur. Working closely with the owners to achieve the desired ambiance, and to highlight the building's exterior architecture, EDS provided complete interior and exterior lighting schemes for the 9400 square foot facility.

Some of the unique features of this project include:

- Power system design for two separate food preparation areas
- Wiring for lighting and audio-visual systems for a Display Kitchen used for videotaping cooking shows/events
- Complete telephone/data cabling for POS and reservation systems
- Design/build of the fire alarm system

ELECTRICAL

DESIGN/BUILD | INTERIOR/EXTERIOR ELECTRICAL | FIRE ALARM
AUDIO/VISUAL | TELEPHONE/DATA



Company Project

DUKE REALTY CORPORATION • Rosemont, IL

The Duke Realty Corporation, regional headquarters located in Rosemont, IL, contracted with EDS to provide an entire 2nd floor tenant build-out, from demolition of existing space to finished project, in an eight-week time period. Despite this aggressive time frame for completion, EDS successfully completed this project without incident or injury. The job consisted of abandoning an auxiliary electrical room (serving only half of a floor), and re-circuiting a new build-out from the main electrical room, allowing the building owner to utilize the space for future tenant needs. EDS was also asked to bring all existing power and lighting systems up-to-date, which involved working closely with Rosemont Village officials in order to meet their specific requirements.

Some of the unique features of this project include:

- Design of a special lighting layout for the conference room, lobby and multiple tenant artwork areas
- Installation of a Lutron lighting control panel, which provides maximum lighting control from desired key locations
- Synchronization of tenant fire alarm system with the main building system, providing new devices, wiring and programming
- Design and installation of a custom telephone/data room, which houses components of a state-of-the-art system designed to meet tenant needs
- Close consultation with the customer's furniture vendor to meet the power and data requirements of all furniture systems (including conference rooms), so that floor and wall devices were carefully concealed
- Design and installation of the conference room audio-visual system, complete with concealed screen, projector and A/V equipment for tenant presentations
- Provision of power for newly installed tenant signage on building exterior

ELECTRICAL

DESIGN/BUILD | DEMO/REMODEL | FIRE ALARM | AUDIO/VISUAL | TELEPHONE/DATA



Company Project

SPRINGBANK AQUATIC CENTER • Plainfield, IL



EDS was originally responsible for installation of the indoor/outdoor sound system. Due to our professionalism and expertise, the customer also asked us to design/install several other low-voltage systems, such as security, fire alarm, and telecommunications, for the Springbank Aquatic Center, located in Plainfield, IL. This project required close consultation with the general contractor's design team and the developer. The turn-key operation even included coordination with AT&T and ordering of the owners phone lines.

Some of the unique features of this project include:

- 50-Outdoor speakers supplying over 2,000 watts of acoustical power
- High-end Marantz TOA and Crown equipment
- Norstar phone system installation and programming

LOW VOLTAGE TECHNOLOGY

SECURITY | FIRE ALARM | AUDIO | TELECOMMUNICATIONS
INDOOR/OUTDOOR SOUND SYSTEM



Company Project

KIMBERLY-CLARK CORPORATION • Romeoville, IL



The Kimberly-Clark Corp., located in Romeoville, IL, contracted with EDS to design and install an innerduct distribution system, with over 10,000 feet of innerduct, in their massive warehouse facility. Then 50 micron MM fiber-optic cabling was used to install a wireless local area network (WLAN) for the location.

EDS was also responsible for the installation and testing of the access points, antennas, UPS battery backups and media converters for this project.

This client was under a tight five-week completion deadline, yet EDS was able to procure the large amounts of material needed for the project, and have them installed and tested on schedule.

Some of the unique features of this project include:

- Over 10,000ft of innerduct
- Over 35,000ft of fiber optic cable
- Category 5e office cabling and Network Equipment Room build-out
- NetPOP cabling, coordination with Service Providers and extension of circuits

LOW VOLTAGE TECHNOLOGY

FIBER-OPTIC | WLAN INSTALLATION | BACKUP SYSTEM
ANTENNAS | MEDIA CONVERTERS



Company Project

GLOBAL RECRUITERS NETWORK • Downers Grove, IL

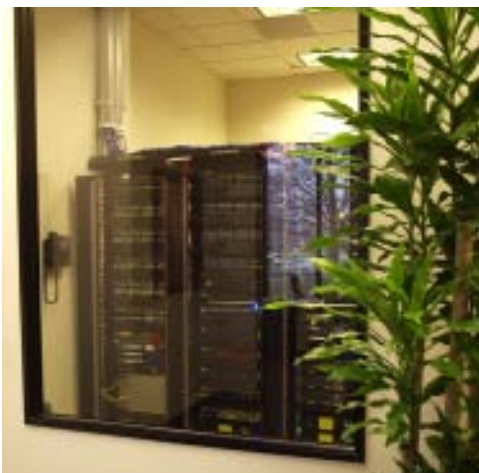


Global Recruiters Network, Inc., located in Downers Grove, IL, presented EDS with the job of designing and building their voice/data and audio-visual systems. EDS designed the telecommunications room at this facility as a visitor show place that stands behind a large glass window.

EDS also worked closely with the client in designing an integrated, state-of-the-art audio-visual system for their training room.

Some of the unique features of this project include:

- Ortronics/Berk-tek cabling solution to meet Category 6 standards
- Coordination with building riser management company on circuit extensions
- Training room A/V systems for both on and off site presentation
- Wall mounted flat panel TV with connection to a scrolling presentation PC



LOW VOLTAGE TECHNOLOGY

DESIGN/BUILD | AUDIO/VISUAL | VOICE/DATA | CATEGORY 6 STANDARDS



Company Project

DUKE REALTY CORPORATION • Rosemont, IL

The Duke Realty Corporation, regional headquarters located in Rosemont, IL, contracted with EDS to install several low-voltage systems, with the goal of providing a single source for Duke's voice/data and audio-visual needs. EDS worked with Duke's corporate IT staff from Indianapolis to create an Equipment Room that matched other locations for corporate wide continuity.

Since this location served as both a regional headquarters and a building management office, the wiring system needed to include ancillary spaces, such as a concierge desk, auditorium and maintenance office, in addition to the Duke tenant space.

EDS was also responsible for synchronizing the tenant fire alarm system with the main building system, and for providing new devices, wiring and programming.

Some of the unique features of this project include:

- Ortronics/Berk-tek cabling solution meeting Category 6 standards
- Over 600 Cat 6 drops
- Conference/Presentation Room A/V design and installation
- Door chimes for after-hours guest entry
- CATV distribution to key offices



Company Project

HAMILTON PARTNERS • Various Locations



EDS was contracted to manage and maintain the telecommunications riser systems at several of the Hamilton Partners' buildings in Chicago's western suburbs. Riser management involves the extension of service provider circuits within the buildings, and requires maintenance of room cleanliness and firestop integrity.

Some of the unique features of this project include:

- Design and installation of building telecommunications and CATV riser systems
- Riser Management services of the building closets
- Tenant telecommunication circuit extensions
- Office-of-the Building Voice/Data wiring installation
- Phone system maintenance
- Low Voltage systems consulting